

# In monte Oliveti à5

Pedro amico Giacobetti

(1558 - 1616)

Responsorium primum ad matitudinem in primo Nocturno Feria V in Cena Domini

Cantus

Quintus

Altus

Tenor

Bassus

9

ri po - test, Spi-ri tus qui - dem prom - ptus

ri po - test, tran - seat a me ca - lix i - ste. Spi-ri tus qui - dem prom - ptus

ri po - test, tran - seat a me ca - lix i - ste. Spi-ri tus qui - dem prom - ptus

ri po - test, tran - seat a me ca - lix i - ste. Spi-ri tus qui - dem prom - ptus

ri po - test, tran - seat a me ca - lix i - ste. Spi-ri tus qui - dem prom - ptus

17

est, ca - ro au - tem in - fir - ma fi - at vo - lun - tas tu - a.

est, ca - ro au - tem in - fir - ma fi - at vo lun - tas tu - a.

est, ca - ro au - tem in - fir - ma fi - at vo lun - tas tu - a.

est, ca - ro au - tem in - fir - ma fi - at vo - lun - tas tu - a.

est, ca - ro au - tem in - fir - ma fi - at vo - lun - tas tu - a.

Vi - gi - la - te et o - ra - te, ut non in - tre - tis in ten - ta - ti - o -

Vi - gi - la - te et o - ra - te, ut non in - tre - tis in ten - ta - ti - o -

Vi - gi - la - te et o - ra - te, ut non in - tre - tis in

Spi - ritus qui - dem prom - ptus est, ca - ro au -

- nem. Spi - ritus qui - dem prom - ptus est, ca - ro au -

- nem. Spi - ritus qui - dem prom - ptus est, ca - ro au -

- tem. Spi - ritus qui - dem prom - ptus est, ca - ro au -

Spi - ritus qui - dem prom - ptus est, ca - ro au -

tem in - fir - ma fi - at vo - lun - tas tu - a.

tem in - fir - ma fi - at vo - lun - tas tu - a.

tem in - fir - ma fi - at vo - lun - tas tu - a.

tem in - fir - ma fi - at vo - lun - tas tu - a.

Responsorium primum ad matitudinem in primo Nocturno Feria V in Cena Domini

In mon-te O-li-ve - ti o-ra - vit ad

Pa - trem: Pa - ter si fi - e -

ri po - test, Spi - ri-tus qui - dem

prom - ptus est, ca - ro au - tem in - fir -

ma fi - at vo - lun - tas tu -

a. Spi - ri-tus qui - dem prom - ptus

est, ca - ro au - tem in - fir - ma

fi - at vo - lun - tas tu - a.

Responsorium primum ad matitudinem in primo Nocturno Feria V in Cena Domini

8  
5  
8  
12  
8  
17  
8  
23  
8  
29  
8  
34  
8  
40  
8  
47  
8

In mon-te O - li - ve - ti o - ra - vit ad Pa -  
trem: Pa - ter si fi - e - ri po - test, tran-seat a  
me ca - lix i - ste. Spi - ri-tus qui - dem prom - ptus  
est, ca - ro au - tem in - fir - ma fi - at vo-lun - tas -  
tu a. Vi - gi-la -  
te et o - ra - te, ut non in-tre-tis in ten -  
ta - ti-o - nem. Spi - ritus  
qui - dem prom - ptus est, ca - ro au - tem in - fir - ma fi -  
at vo-lun - tas - tu a.

Altus

# In monte Oliveti à5

Pedro amico Giacobetti

(1558 - 1616)

Responsorium primum ad matitudinem in primo Nocturno Feria V in Cena Domini

8  
5  
11  
16  
21  
29  
35  
40  
45

In mon-te O-li-ve - ti o-ra - vit\_\_\_\_\_ ad Pa -  
trem: Pa - ter si fi - e - ri\_\_\_\_\_ po - test, tran -  
- se-at a me ca-lix i - ste. Spi - ri-tus qui - dem prom -  
- ptus est, ca - ro au - tem in - fir - ma\_\_\_\_\_  
\_\_\_\_\_ fi - at vo-lun-tas tu - a.\_\_\_\_\_ Vi - gi - la -  
- te et\_\_\_\_\_ o-ra - te, ut non in - tre-tis in\_\_\_\_\_ ten-ta-ti -  
o - nem. Spi - ri-tus  
qui - dem prom - ptus est, ca - ro au - tem in - fir -  
- ma\_\_\_\_\_ fi - at vo-lun-tas tu - a.\_\_\_\_\_

Tenor

# In monte Oliveti à5

Pedro amico Giacobetti

(1558 - 1616)

Responsorium primum ad matitudinem in primo Nocturno Feria V in Cena Domini

8 In mon-te O-li-ve - ti o-ra - vit ad Pa - trem: Pa -

7 ter si fi - e - ri po - test, tran - se-at a me ca-lix i -

13 - ste. Spi - ri-tus qui - dem prom - ptus

17 est, ca - ro au-tem in-fir - ma fi-at vo - lun - tas

23 tu - a. Vi - gi - la - te et

30 o-ra - te, ut non in - tre-tis in ten-ta - ti -

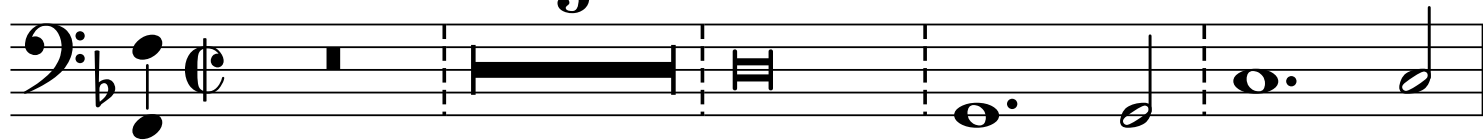
37 o - nem. Spi - ri-tus qui - dem prom - ptus

42 est, ca - ro au-tem in-fir - ma fi-at vo-lun -

48 tas tu a.

**Bassus****In monte Oliveti à5**Pedro amico Giacobetti  
(1558 - 1616)

Responsorium primum ad matitudinem in primo Nocturno Feria V in Cena Domini

**5**

9

Pa - ter si fi - e -



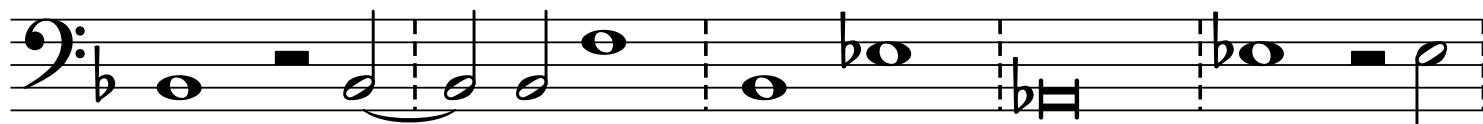
13

ri po - test, tran - se-at a me ca - lix i -



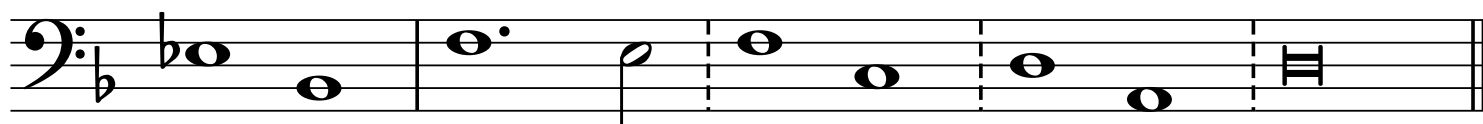
17

- ste. Spi - ri-tus qui - dem prom - ptus



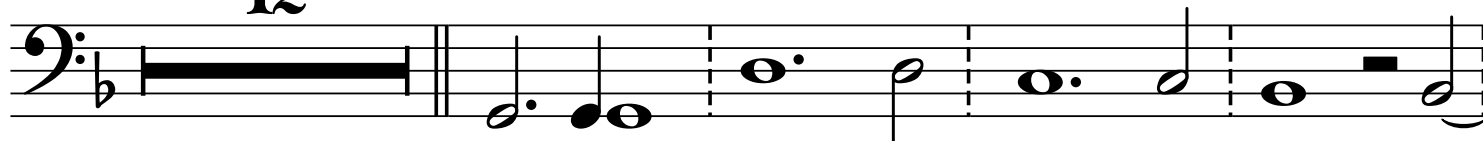
22

est, ca - ro au - tem in - fir - ma fi -



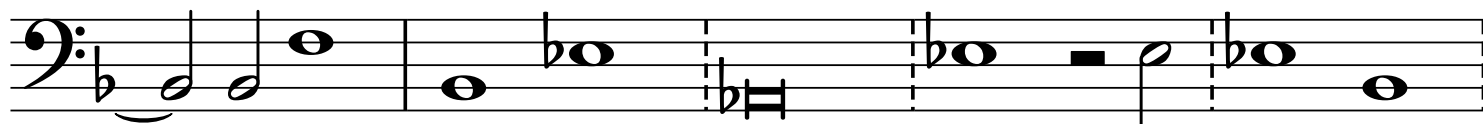
27

at vo - lun - tas tu - a.

**12**

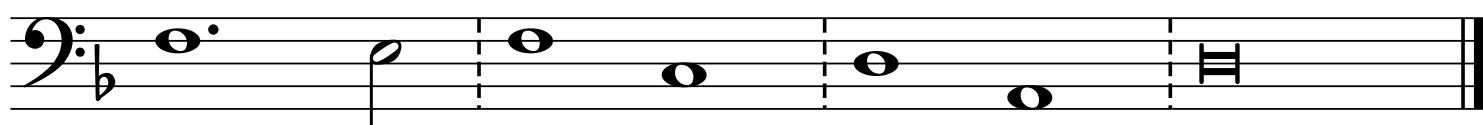
43

Spi - ri-tus qui - dem prom - ptus est, ca -



48

- ro au - tem in - fir - ma fi - at vo -



lun - tas tu - a.